

AUTOMOTIVE KITS

EBH - SPRING EYE BUSH REPLACEMENT KIT

- Safe, simple and speedy hands free process.
- Up to 50-60% time & labour cost saving.
- The lightweight & compact design allows work to be carried out on the vehicle where access is restricted.
- Little or no manual effort required.
- All work may be carried out in situ on the vehicle.
- At a total weight of 8 kg fully assembled falls well within EU manual handling of loads regulations.
- Can be easily and cheaply upgraded should new vehicles be introduced on to the market at a future date.



Name	Part number	Pressure MPa	Capacity kN (t)	Cylinder type	Weight kg
EBH6	44592	70	62 (6)	CHF62	8.6
EBH13	44594	70	132 (13)	CHFA132	11
EBH18	44598	70	182 (18)	CHFA182	13
EBH18 Extended	49220	70	182 (18)	CHFA182	13
EBH26	46957	70	262 (26)	CHFA262	15.1
EBH37	46959	70	372 (37)	CHFA372	22.5

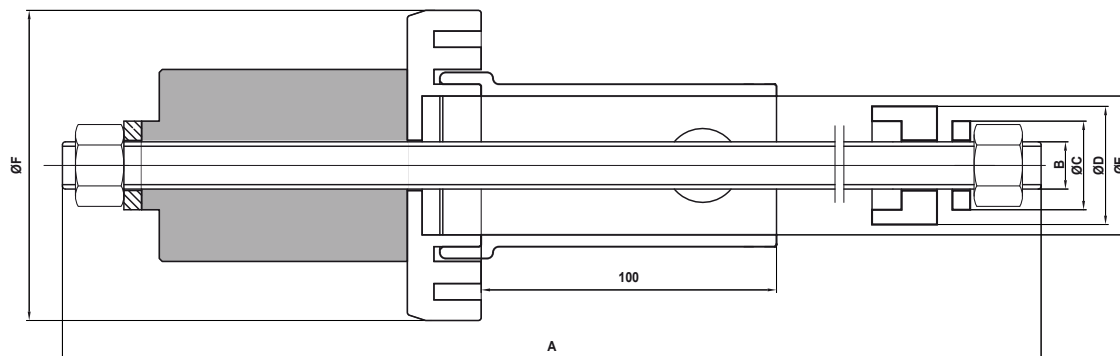


Removing the old bush and inserting a new on a DAF CF85 truck by the use of a EBH18 - kit simply the work. The operation can be performed in a safe and rapid manner.

Technical data

Name	Capacity ton	Cylinder	Rod	Adapter	Sleeve	Counter Support
EBH6	6	CHF62	M12x500 (12.9), M16x500 (12.9)	AD6-18*	TA49, TA73	BR35/25-16, BR45/35-24, BR65/45-30
EBH61	6	-	M12x500 (12.9), M16x500 (12.9)	AD6-18*	TA49, TA73	BR35/25-16, BR45/35-24, BR65/45-30
EBH13	13	CHFA132	M20x500 (10.9)	AD6-18*	TA49, TA73	BR45/35-24, BR65/45-30
EBH131	13	-	M20x500 (10.9)	AD6-18*	TA49, TA73	BR45/35-24, BR65/45-30
EBH18	18	CHFA182	M24x500 (10.9)	AD6-18*	TA49, TA73	BR45/35-24, BR65/45-30
EBH181	18	-	M24x500 (10.9)	AD6-18*	TA49, TA73	BR45/35-24, BR65/45-30
EBH26	26	CHFA262	M30x500 (10.9)	AD26-37	TA73, TA95	BR65/45-30, BR90/65-36
EBH261	26	-	M30x500 (10.9)	AD26-37	TA73, TA95	BR65/45-30, BR90/65-36
EBH37	37	CHFA372	M36x560 (10.9)	AD26-37	TA95, TA115	BR90/65-36, BR110/90-36
EBH371	37	-	M36x560 (10.9)	AD26-37	TA95, TA115	BR90/65-36, BR110/90-36

* AD6-18 is patented



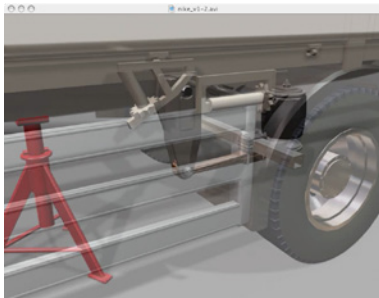
Name	Capacity ton	A mm	B	C ø mm	D ø mm	E ø mm	F ø mm
EBH6	6	500	M12/M16	24/30	35 mm, 45 mm, 65 mm	49 mm, 73 mm	105
EBH13	13	500	M20	36	45 mm, 65 mm	49 mm, 73 mm	105
EBH18	18	500	M24	44	45 mm, 65 mm	49 mm, 73 mm	105
EBH26	26	500	M30	56	65 mm, 90 mm	73 mm, 95 mm	127
EBH37	37	500	M36	68	90 mm, 110 mm	95 mm, 115 mm	127

* AD6-18 is patented

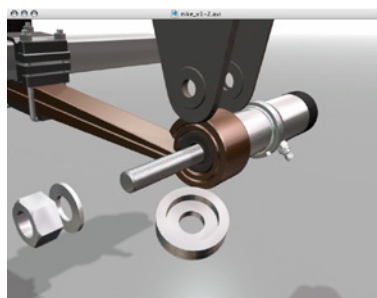
REHOBOT's EBH18 hydraulic spring eye bush replacement tools have been developed in conjunction with commercial vehicle manufacturers and vehicle workshop personnel to provide a lightweight, in situ time & labour saving solution for all makes & models of commercial vehicles.

Using REHOBOT's 18 ton capacity lightweight aluminium hollow bore cylinder and the comprehensive set of accessories contained within the kits the equipment can be easily used on any vehicle.

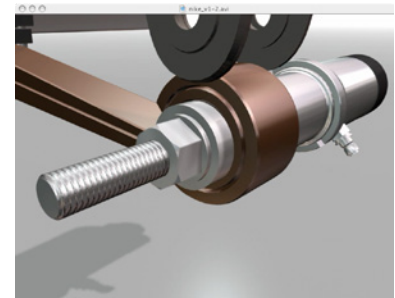
Sequence of operation using the EBH - kit



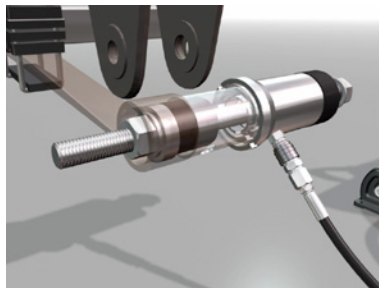
Step 1



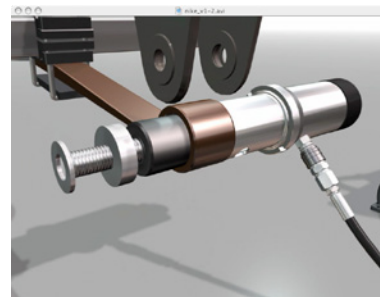
Step 2



Step 3



Step 4



Step 5

PUMP ALTERNATIVES TO OPERATE ALL AUTOMOTIVE TOOLS & KITS

Each AUTOMOTIVE kit require a suitable hydraulic pump unit. This is mandatory for all other hydraulic tools from REHOBOT. The kits may preferably be operated by either the PP70A-1000 pneumatic operated foot pump or the PHS70-1000 hydraulic hand pump.



More comfort – PP70A-1000



More portable – PHS70-1000

ETC37 & ETC50 PIN & BUSH REPLACEMENT TOOL KITS

REHOBOT'S ETC37 and ETC50 hydraulic pin & bush extraction tool kits have been developed in conjunction with the major manufacturers of heavy plant and special purpose machines for the construction industry to provide a lightweight, in situ, time and labour saving solution for the demanding service requirements on these machines.

- Safe, simple, hands free operation
- Up to 60% time and labour saving
- Can be adapted to suit all makes of construction plant and heavy equipment
- Flexible and adaptable system
- Improved health and safety over traditional methods
- Breakout & extension sleeves common to 37 & 50 ton kits
- Covers most pin & bush applications in use in the industry
- All work carried out in situ on the vehicle
- Suitable for on site and workshop repairs

Using REHOBOT'S 37 and 50 ton lightweight aluminium hollow bore 37 ton and 50 ton cylinders together with the unique stacking sleeve system and comprehensive sets of accessories incorporated in these tool kits the equipment can be easily used on any make of machine.



Name	Part number	Pressure MPa	Capacity kN (t)	Stroke mm	Cylinder type	Weight kg
ETC37	48072	70	358 (36)	51	CHFA372	24.3
ETC50	48073	70	508 (52)	104	CHFA504	46.6



The 50 ton kit in use on a Volvo L150.



The 37 ton kit in use on a logging machine.

BEU110 – THE IN SITU BALL JOINT EXTRACTOR KIT

REHOBOT's unique BEU110 10 ton multi headed ball joint extractor is a superb complimentary tool to the spring eye bushing kits. This tool has again been developed in conjunction with leading commercial vehicle manufacturers and workshop personnel to ensure that it covers virtually all the ball joints currently in use on vehicles on the present market.

The BEU110's compact size and design allows it to access the majority of ball joints on vehicles such as: DAF, MAN, Mercedes, Scania, Volvo, Iveco & Hino.

Also, the 10 ton load capacity ensures quick separation of the joint.

Accessories

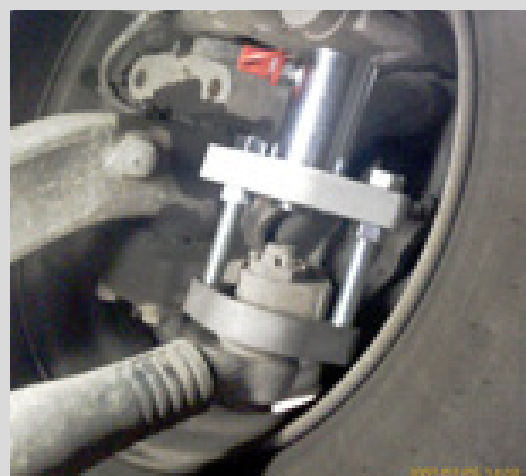
TD35	35 mm "horse shoe"
TD75	75 mm "horse shoe"
BE110 & adapter kit ADK	Dedicated add on kit for Mercedes Benz Sprinter



Name	Part number	Pressure MPa	Capacity kN (t)	Stroke mm	Stroke volume cm ³	Weight kg
BEU110	47570	70	110(11)	54	86	3.8

SECRETS OF THE BEU - SYSTEM

- Interchangeable horseshoe heads 40 & 50mm included.
- Safe hands free operation.
- Full 10 ton breakout force.
- Covers most ball joints currently on the market.
- Adapters available to allow in situ replacement of ball joints.
- Cost effective & labour saving.
- Future proof due to modular design.



BEU110 c/w 50mm horseshoe on a Scania Truck

Technical data



Accessories

ADK Adapter Kit

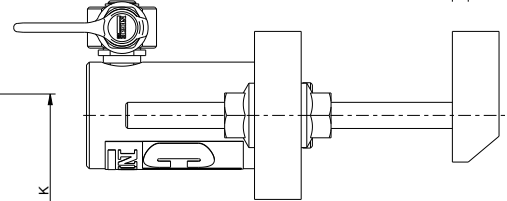
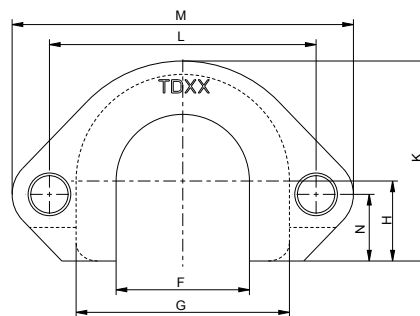
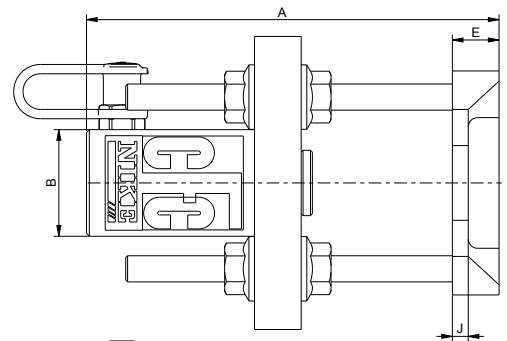
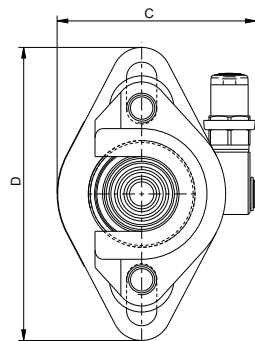
The ADK kit is used together with BEU110 to extract and insert the lower ball-joint on Mercedes-Benz Sprinter (W901-W905) 1995 to 2006 and Volkswagen LT2 1996 and onwards. Please note that there are two different control arm designs and ball joints on these vehicles. This kit is suitable for the Ø62 mm (outer diameter) ball joint.

BE110 Claw

This breaker is used together with BEU110 to remove the front hub from the wishbone arm prior to ball-joint removal on Mercedes-Benz Sprinter (W901-W905) 1995 to 2006 and Volkswagen LT2 1996 and onwards.

TD75 Adapter

TD75 is used for larger ball joints and has an opening of 75 mm / 3".



Name	A mm	B ø mm	C mm	D mm	E mm	F mm	G mm	H mm	J mm	K mm	L mm	M mm	N mm
BEU110	221	57.1	107	157	25	-	-	-	-	-	-	-	-
TD40	-	-	-	-	-	40	70	25	8.5	70	92	120	25
TD50	-	-	-	-	-	50	80	30	10	75	100	128	25
TD75*	-	-	-	-	-	75	105	30	10	87.5	125	153	25
* Accessory													